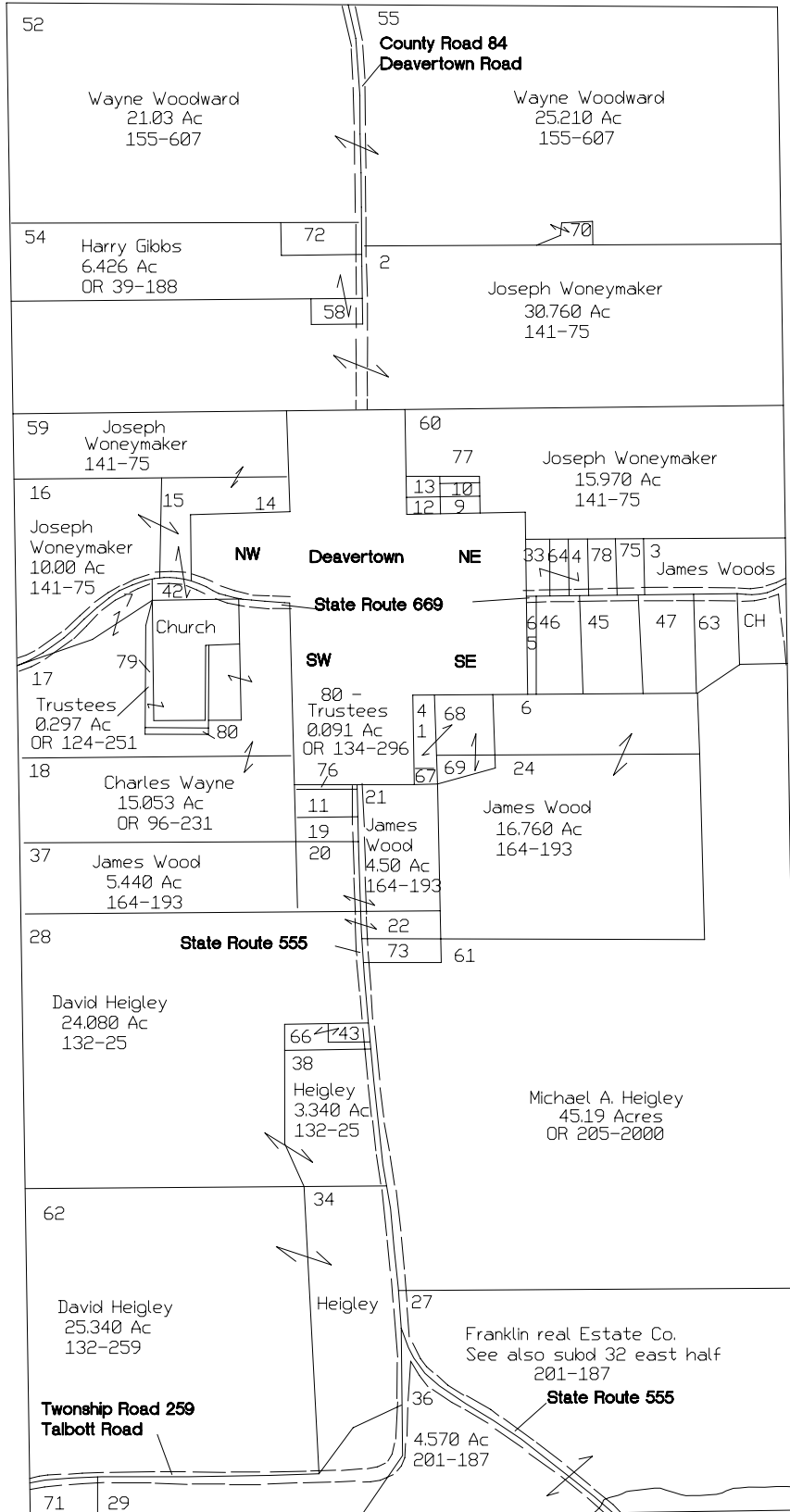


YORK TOWNSHIP

Range 14 Township 14 Section 36 West Half



- | | |
|---|---|
| 4-33-64-Gary Harrison 0.820 Ac OR42-285 | 58-Harry Gibbs 0.250 Ac OR 39-188 |
| 9-10-Ray Burns 0.380 Ac 163-396 | 63-James Wood 1.050 Ac 178-234 |
| 11-Amy J Smith 0.320 Ac OR 207-3235 | 65-Ray Burns 0.030 Ac OR 50-736 |
| 12-Ronald Spinks Jr. 0.120 Ac 196-776 | 66-Larry Bolyard 0.330 Ac 171-293 |
| 13-Ray Burns 0.120 Ac OR50-736 | 68-69-York Township 1.490 Ac OR 110-424 |
| 19-Russell Pletcher 0.380 Ac 164-509 | 70-Wayne Woodward 0.500 Ac 155-067 |
| 22-Michael Heigley 0.750 Ac 205-13 | 71-Franklin Real Estate 0.780 Ac 201-187 |
| 23-James Woods 1.970 Ac 178-234 | 72-William Picone 0.574 Ac 185-763 |
| 29-Robert Greathouse 4.07 Ac OR 198-353 | 73-Roger Pletcher 0.800 Ac 138-289 |
| 39- Charles Wayne 0.640 Ac OR 96-231 | 75-Ernest Vanoster 0.370 Ac OR 122-358 |
| 43-Larry Bolyard 0.330 Ac 171-293 | 76-Brian Boring 0.025 Ac OR 164-149 |
| 46-Janice Inman 0.970 Ac 186-141 | 77-Ray Burns 0.060 Ac OR 50-736 |
| 47-Nathan Filkins 0.800 Ac 193-448 | 78-Gary Lee Harrison 0.410 Ac OR 207-2435 |
| 45-John Reed 0.890 Ac 135-239 | |