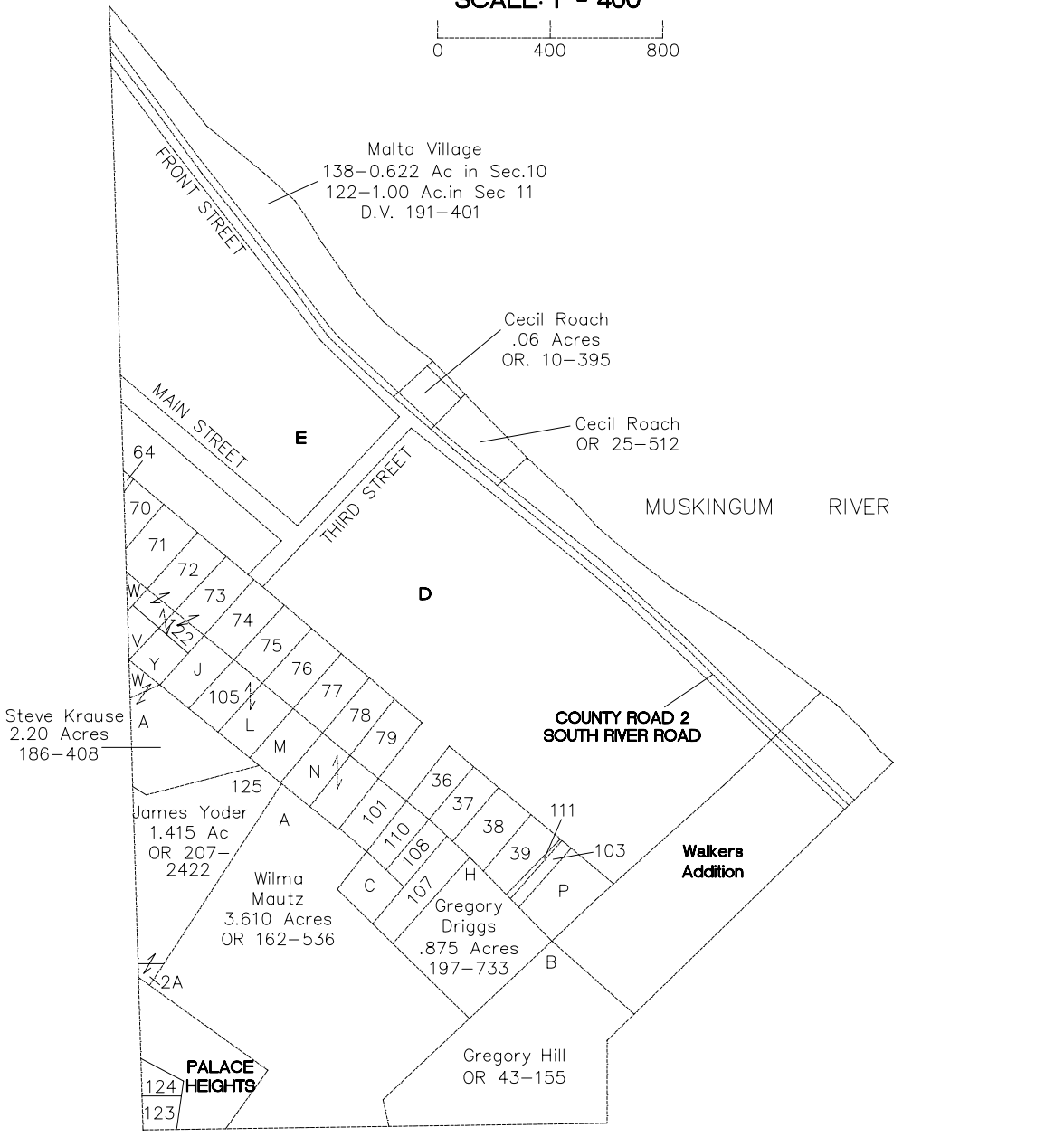


MALTA TOWNSHIP

RANGE 12 TOWNSHIP 10 SECTION 11 WEST HALF

SCALE: 1" = 400'



- A- Lina Jarrell .95 Acres 201-389
- C- Russ Farley .275 Acres OR 63-295
- J- William & John Clemens .10 Acres 182-565
- L- Mark Clemens .04 Acres 170-545
- M- Kimberly Stevenson .20 Acres 190-72
- N- SE- Christopher Middy .20 Acres OR 44-733
- N-NW- Robert Mayle .23 Acres 185-125
- Y-V- Donald Benedick .48 Acres 201-389
- W-SW- Columbia Gas .193 Acres
- W- Linda Jarrell .22 Acres 201-389
- 101- Norma Ferguson .15 Acres OR 49-666
- 105- Mark Clemens .10 Acres 170-545
- 107- Redleaf Properties .335 Acres OR 38-418
- 108- Martin Hensley .15 Acres 168-755
- 110- Gene Hensley .115 Acres 190-237
- 122- Malta Church 0.27 Acres D.V.198-284
- 123- Harry Gessell .929 Acres OR 19-431
- 124- Harry Gessell .185 Acres OR 19-431
- 111- Howard Cox .015 Acre 158-33
- 103- Anthony Shack .155 Acre OR 53-28
- P- Faye Barkhurst Trust 202-1
- 126- Gregory Hill .063 Acre OR 63-248