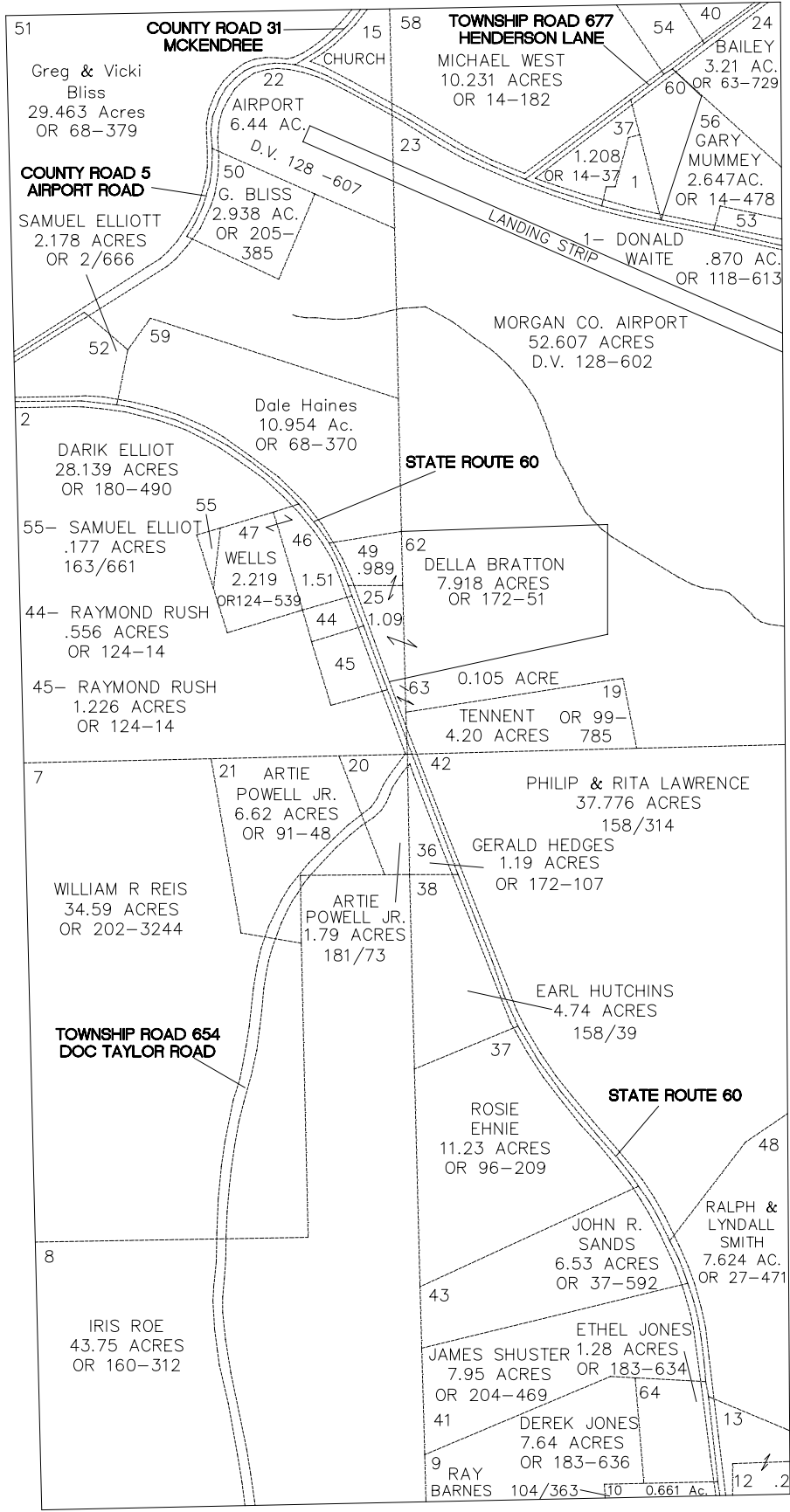
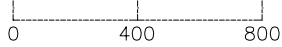


MEIGSVILLE TOWNSHIP

RANGE 11 TOWNSHIP 10 SECTION 7 EAST HALF

SCALE: 1" = 400'



- 40- GARDNER .53 OR 83-28
- 54- GARDNER 1.03 OR 83-28
- 53- MUMMEY .474 184/471
- 60- JAMES RUTTER 1.554 ACERS OR 124-572

- 12-CLAY ANTHONY AMERICAN BONDING .20 ACRES OR 201-21
- 13-CLAY ANTHONY AMERICAN BONDING 1.80 ACRES OR 201-21