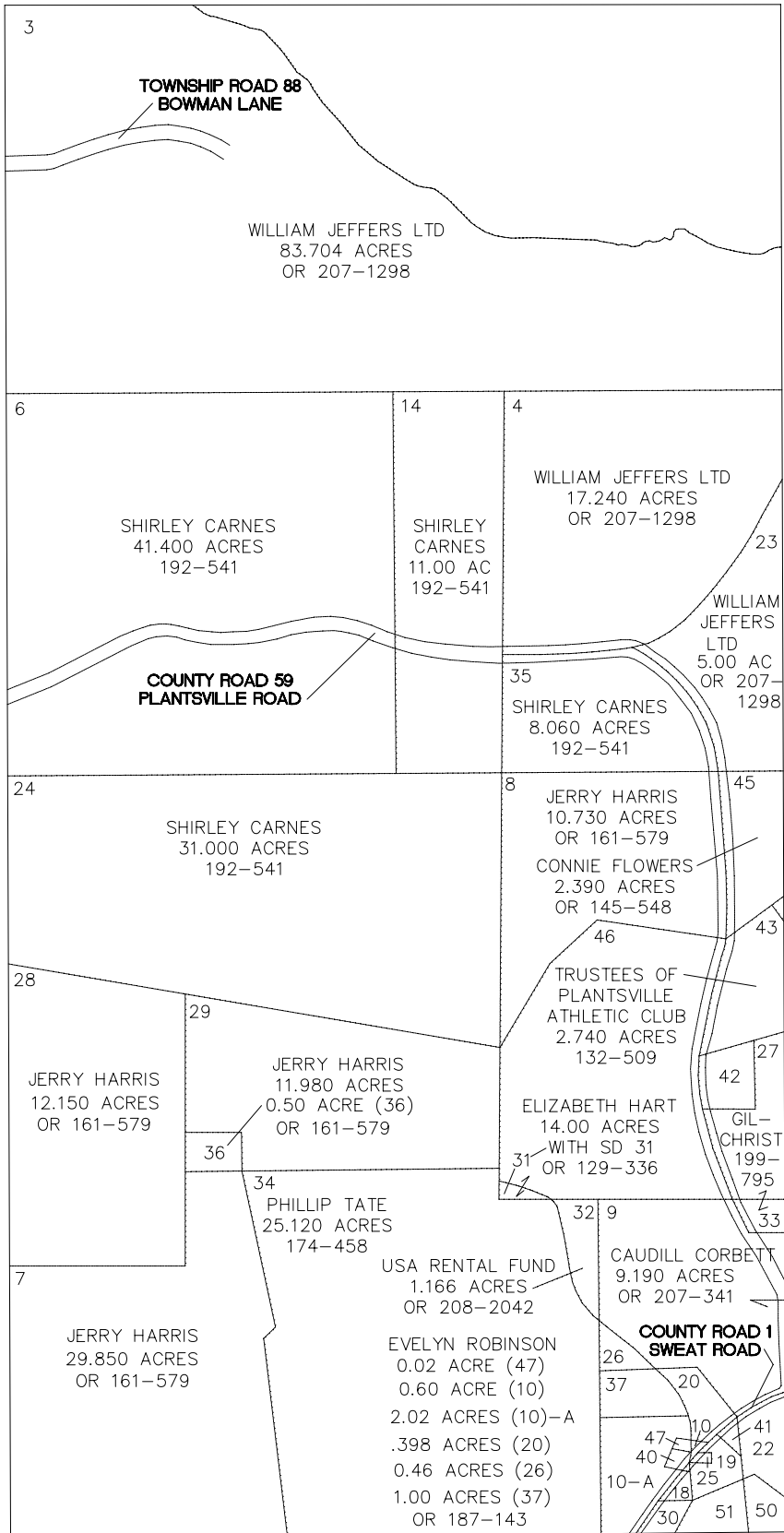
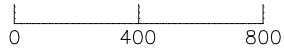


MARION TOWNSHIP

RANGE 12 TOWNSHIP 8 SECTION 13 WEST HALF

SCALE: 1" = 400'



25 - GUY SMITH	0.044 ACRES	OR 133-65
18,30 - GUY SMITH	0.270, 0.200 ACRE	OR 66-186
22 - DIANA GOINS	0.687, 0.342 ACRE	OR 197-778
40 - AMY ROBINSON COBB	0.180 ACRE	OR 129-699
19-41 - PHYLLIS MAYLE	0.175 ACRE	140-681
50,51-CHRISTA & P. MAYLE	0.198, 0.948 ACRE	OR 89-69