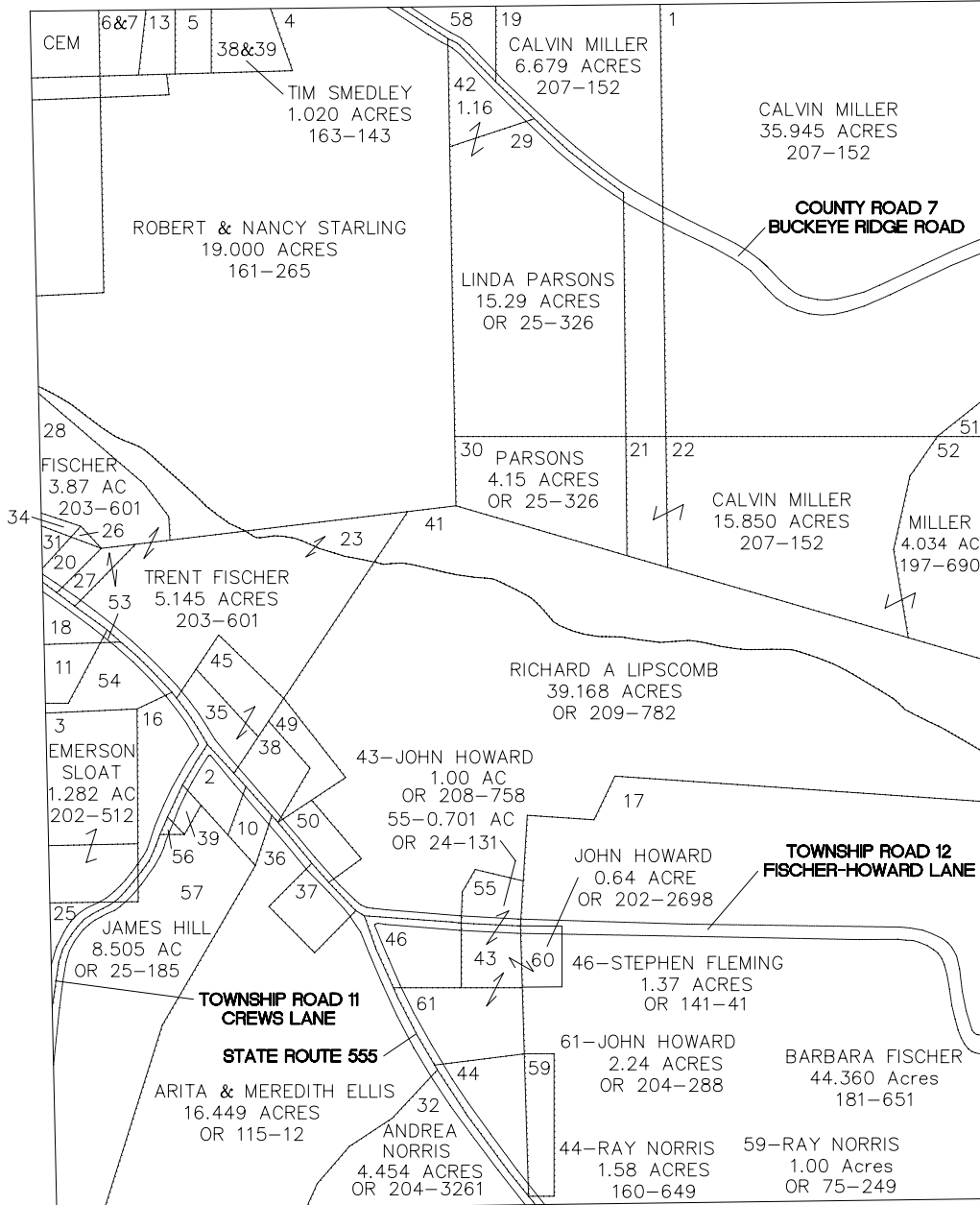
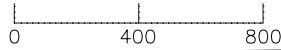


# MARION TOWNSHIP

RANGE 12 TOWNSHIP 8 FRACTIONAL SECTION 2

SCALE: 1" = 400'



2 - SHANNON NORTH	0.820 ACRE	OR 179-573
5 - BOARD OF TRUSTEES	0.530 ACRE	121-241
6,7 - RICHARD MAYHUGH	0.550 ACRE	186-711, 177-64
10 - LISA HILL	0.732 ACRE	OR 62-196
11 - CHESTERHILL FIRE DEPT.	0.390 ACRE	198-75
13 - RICHARD MAYHUGH	0.500 ACRE	191-192
16 - HILL, MAYLE, HATZER	1.000 ACRE	OR 135-237
18 - CHESTERHILL FIRE DEPT.	0.815 ACRE	198-75
20,26 - NELSON & GLORIA MYERS	0.370 ACRE	206-316
25 - STEPHEN MAYLE	0.500 ACRE	182-355
31 - JERRY BOWMAN	0.040 ACRE	OR 31-404
34 - JERRY BOWMAN	0.090 ACRE	OR 31-404
35 - RICHARD WOODYARD	0.980 ACRE	OR 208-220
37 - CHARLES R BAILEY	0.747 ACRE	OR 195-17
38 - CECIL MAYLE	0.958 ACRE	OR 14-80
39 - ALISA HILL	0.240 ACRE	OR 74-19
45 - RICHARD WOODARD	0.910 ACRE	OR 208-220
49 - CECIL MAYLE	0.724 ACRE	OR 14-80
50 - CHARLENE PARSONS	0.659 ACRE	OR 197-536
51 - CALVIN MILLER	0.225 ACRE	197-690
53 - EMERSON SLOAT	0.078 ACRE	202-512
54 - EMERSON SLOAT	0.180 ACRE	202-512
56 - JAMES O. HILL	0.080 ACRE	OR 25-182
58 - SEBERT WILSON	0.701 ACRE	OR 60-480