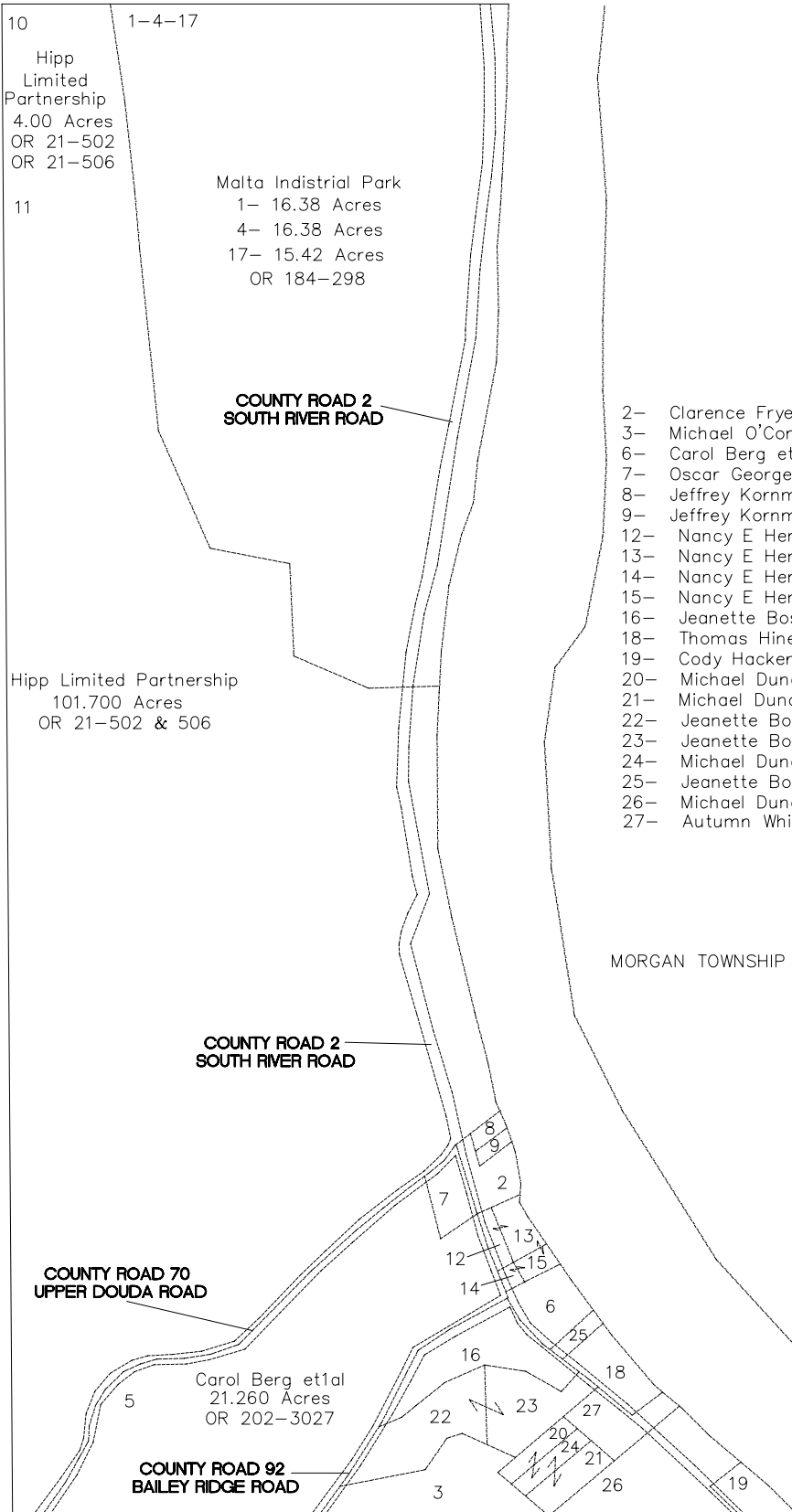
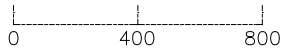


# MALTA TOWNSHIP

RANGE 12      TOWNSHIP 10      SECTION 24      RIVER

**SCALE: 1" = 400'**



10  
Hipp Limited Partnership  
4.00 Acres  
OR 21-502  
OR 21-506

1-4-17

11

Malta Industrial Park  
1- 16.38 Acres  
4- 16.38 Acres  
17- 15.42 Acres  
OR 184-298

**COUNTY ROAD 2  
SOUTH RIVER ROAD**

Hipp Limited Partnership  
101.700 Acres  
OR 21-502 & 506

- 2- Clarence Frye .910 Acres 165-503
- 3- Michael O'Connel 79-733 3.233 Ac
- 6- Carol Berg et1al .500 Acres OR 202-3027
- 7- Oscar George .860 Acres OR 46-133
- 8- Jeffrey Kornmiller 0.06 Acres OR 193-146
- 9- Jeffrey Kornmiller .030 Acres OR 191-61
- 12- Nancy E Henderson .810 Acre OR 205-2955
- 13- Nancy E Henderson .280 Acre OR 205-2955
- 14- Nancy E Henderson .220 Acre OR 205-2955
- 15- Nancy E Henderson .110 Acre OR 205-2955
- 16- Jeanette Bosworth 2.42 Ac OR 45-321
- 18- Thomas Hines .926 Acres 205-568
- 19- Cody Hacker .725 Acres OR 209-1025
- 20- Michael Duncan 0.407 Acres OR 63-298
- 21- Michael Duncan 0.644 Acres Or 63-298
- 22- Jeanette Bosworth 2.25 Acres OR. 146-415
- 23- Jeanette Bosworth 4.00 Acres OR 146-415
- 24- Michael Duncan 0.399 Acres OR 63-298
- 25- Jeanette Bosworth .192 Acres OR 146-415
- 26- Michael Duncan 2.953 Acres OR 63-298
- 27- Autumn Whitt 1.00 Acres OR 176-428

MORGAN TOWNSHIP

**COUNTY ROAD 2  
SOUTH RIVER ROAD**

**COUNTY ROAD 70  
UPPER DOUDA ROAD**

Carol Berg et1al  
21.260 Acres  
OR 202-3027

**COUNTY ROAD 92  
BAILEY RIDGE ROAD**