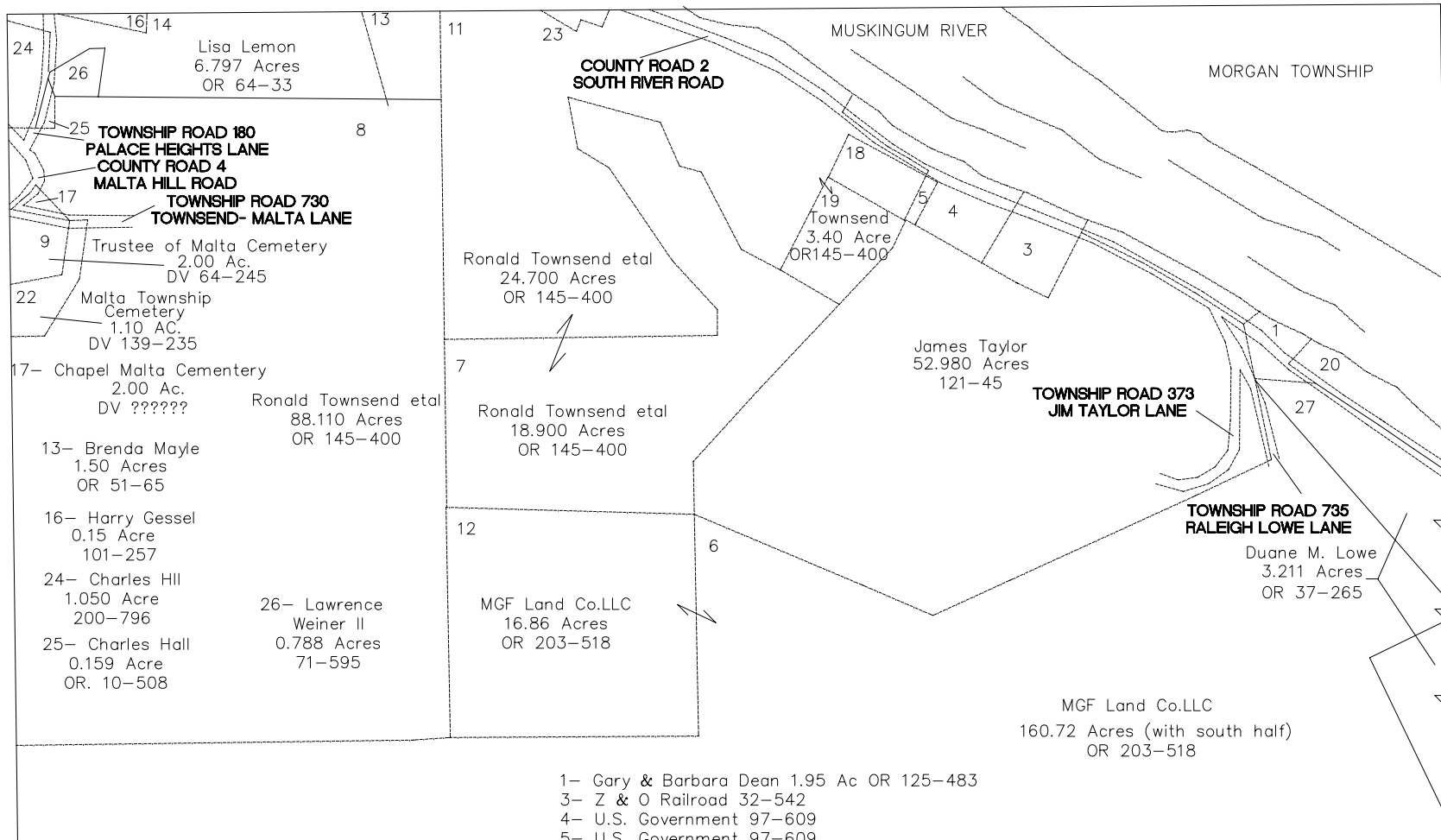
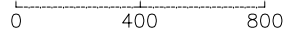


MALTA TOWNSHIP

RANGE 12 TOWNSHIP 10 SECTION 14 NORTH HALF

SCALE: 1" = 400'



- 1- Gary & Barbara Dean 1.95 Ac OR 125-483
- 3- Z & O Railroad 32-542
- 4- U.S. Government 97-609
- 5- U.S. Government 97-609
- 18- Joy R Harman 1.250 Acres 202-385
- 20- Thomas Ferguson .750 Acres OR 33-155
- 23- County of Morgan