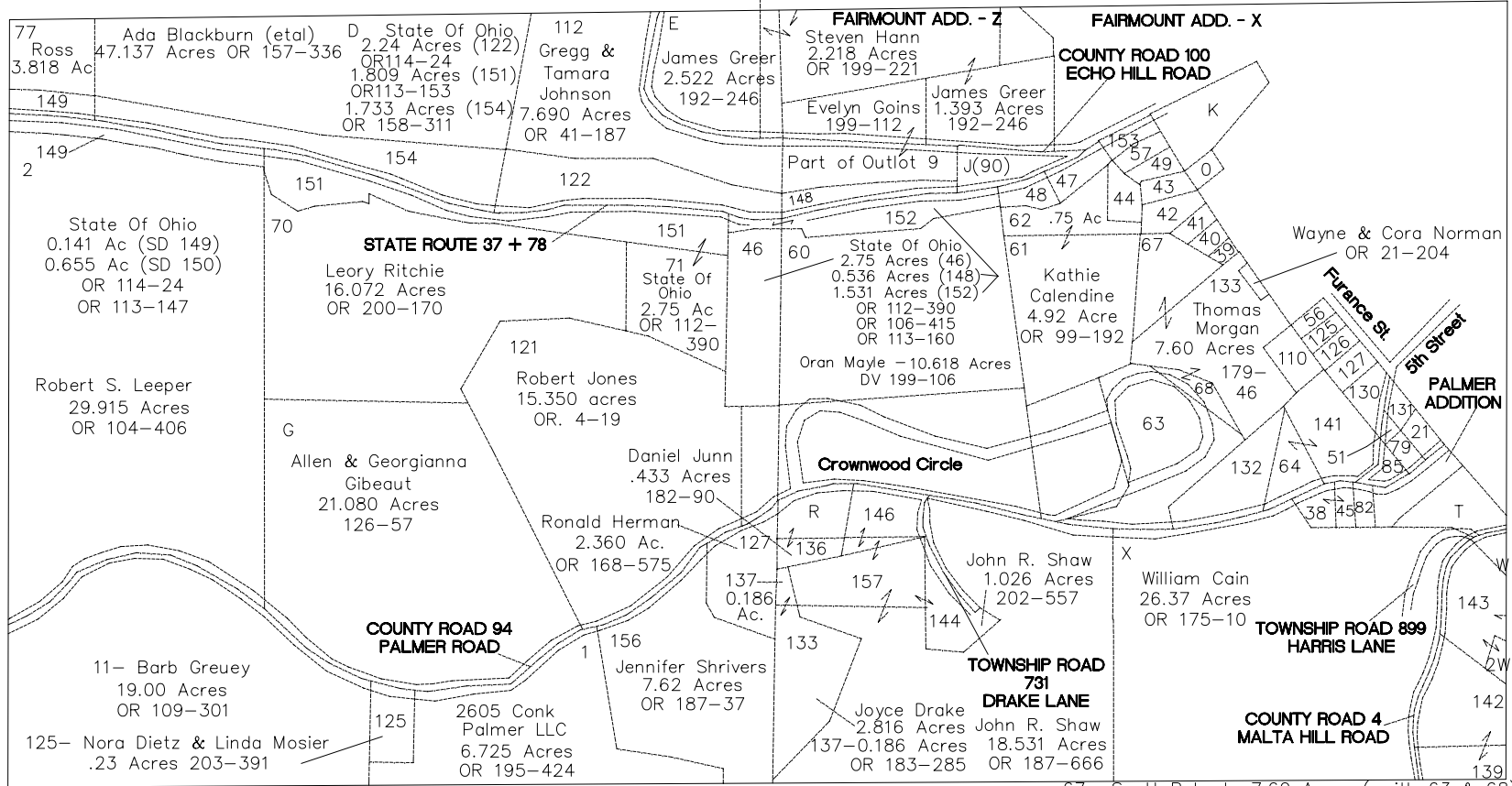
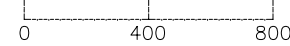


MALTA TOWNSHIP

SCALE: 1" = 400'

RANGE 12 TOWNSHIP 10 SECTION 10 SOUTH HALF



- K- Village of Malta 1.50 Acres 191-401
- O- Gloria Gormley .20 Acres OR 21-467
- T- William Cain 1.095 Acres 175-10
- W- Wilma Mautz 2.58 Acres OR 162-536
- 2W- Columbia Gas .193 Acres (Southwest Part)
- 21- Donald Jackson .20 Acres 93-286
- 38- Harold Gibson .500 Acres 183-404
- 39- Bruce Thompson .08 Acres OR 13-265
- 40- Bruce Thompson .13 acres OR 13-265
- 41- Bruce Thompson .18 Acres OR 13-265
- R- D. Junn .588 Acres 182-90

- 42- Frank & Dorothy Calendine 6.77 Acres 204-276
- 43- Thomas Gormley .43 Acres 163-288
- 48- State Of Ohio .25 Acres OR 114-22
- 47- State Of Ohio .48 Acres OR 104-197
- 49- Joshua Shaw 0.211 acres OR 206-342
- 51- Donald Jackson .052 Acres 117-307
- 45- Harold Gibson .30 Acres 183-404
- 56- Carole Santek .18 Acres 196-56
- 57- Joshua Shaw 0.54 acres OR 206-342
- 63- Scott Roberts 7.60 Acres (with 67 & 68) 205-646
- 64- Jeffrey Taylor 1.14 Acres 180-688

- 67- Scott Roberts 7.60 Acres (with 63 & 68) 205-646
- 68- Scott Roberts 7.60 Acres (with 63 & 67) 205-646
- 79- James Middy .18 Acres 199-627
- 82- John Lowery .38 Acres OR 20-254
- 85- Connie McGrew .18 Acres 205-198
- 110- Carole Santek .75 Acres 196-56
- 122- Sate of Ohio 2.24 AC. OR 114-24
- 125- James Kennedy .23 Acres OR 151-621
- 126- M. Fisher .23 Acres 87-551
- 127- P. Palmer .45 Acre 79-27
- 130- Kaci L Gray 0.683 Acres OR 206-2577
- 131- Donald Jackson .148 Acres 106-367
- 139- Harry Gessel .010 OR 18-431

- 141- Jeffrey D. Taylor 2.00 Acres 180- 628
- 142- Harry Gessel 1.220 OR 18-429
- 143- James Yoder 2.329 OR 207-2422
- 146- John Shaw 1.306 Acres OR 51-101
- J-(90) STATE OF OHIO 0.20 OR 105-402
- 153- Sate of Ohio .329 AC. OR 113-132