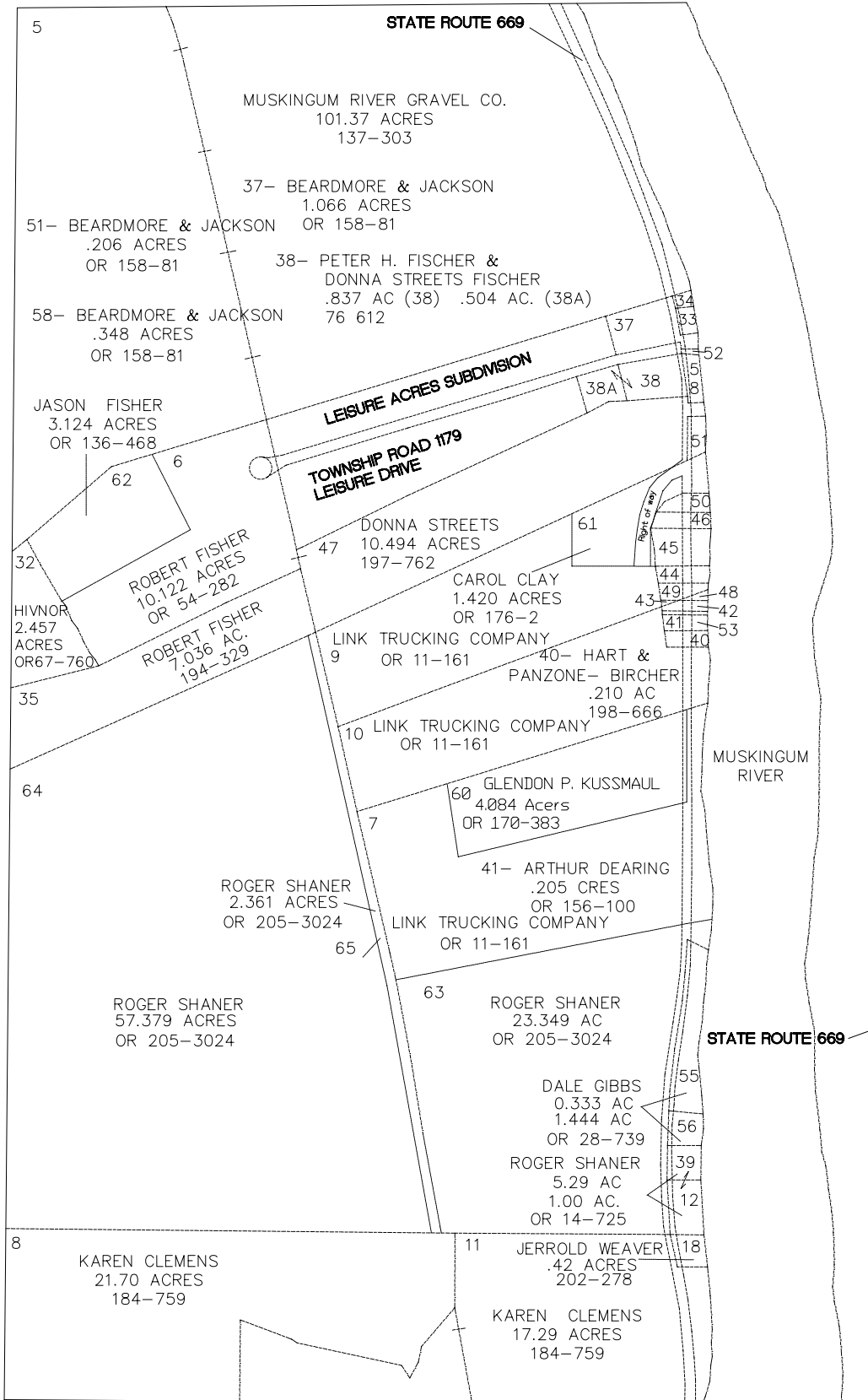
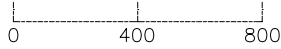


# BLOOM TOWNSHIP

RANGE 12 TOWNSHIP 11 SECTION 21 WEST HALF

SCALE: 1" = 400'



- |  |   |
|--|---|
| 33- CHARLES SPOHN .184 ACRES OR 203-3082   | 46- PAUL CHAMBERS .247 ACRES 195-663        |
| 34- RADLEY NOCE 0.0999 ACRE OR 197-470     | 48- GLENDON KUSSMAUL 0.047 ACRES OR 209-520 |
| 42- GLENDON KUSSMAUL .146 ACRES OR 209-520 | 49- GLENDON KUSSMAUL .182 ACRES OR 209-520  |
| 43- GLENDON KUSSMAUL .012 ACRES OR 209-520 | 50- JOSEPH THARP .172 ACRES 198-41          |
| 44- MARK SCHULTZ 0.228 ACRES OR 204-3217   | 52- BEARDMORE & JACKSON .019 CRES OR 158-81 |
| 45- ALFRED BOOKMAN .584 ACRES OR 138-296   | 53- ARTHUR DEARING .053 ACRES OR 156-100    |